

# MERCHANDISE BAG GUSSETED TEMPLATE

**Finished Size: 12" x 2 3/4" x 18"**  
**Pinch Bottom**

PRINT MUST FIT WITHIN SHADED AREA

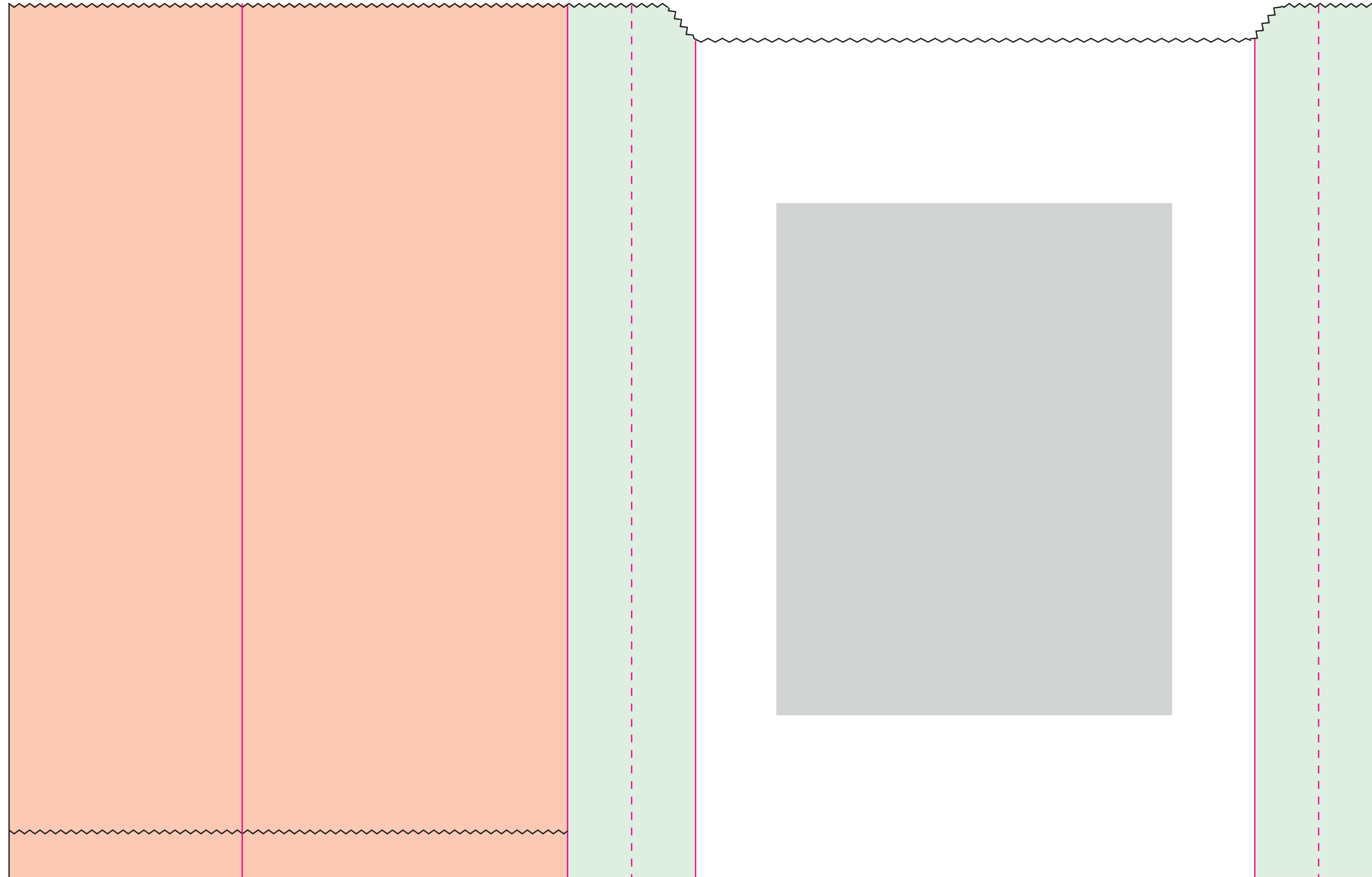


**Please note our proof/ink policy:**  
 One set of proofs will be included at no charge. Additional proofs or drawdowns as a result of customer changes will be billed as follows:

- Additional Proofs: \$40.00/ea
- Additional Drawdowns - \$25.00/color

*We are happy to provide proofs and drawdowns during the quoting stage. Any cancelled purchase orders or speculative work not resulting in a PO within 60 days will be billed at costs listed above.*

Post printing doesn't afford the same opportunity for color, clarity, consistency of position or complexity of artwork as compared to inline printing. Due to the limitations of the offline process, the expectations need to be understood prior to placing an order as there will be no returns accepted relative to the above listed items.



Back Seam

Please check spelling, layout, and design carefully prior to approving this proof as once approval has occurred, WCI is not responsible for any costs, including corrections and/or reprints. All orders are subject to the flexographic printing process and manufacturing capabilities listed in our product catalog. The following variations, including but not limited to, the art placement, bag composition, or paper/ink color between proofs and the completed order, will be considered acceptable bag quality. Cosmetic blemishes, which do not materially affect performance of the packaging, will not be considered a defect.

<b>CONTROL #:</b>	Paper Color/Basis Weight	<b>PRINT NAME:</b>			<b>DATE:</b>	
		Ink Color #1	Ink Color #2	Ink Color #3	Art Dimensions	Art Placement
Customer Approval to Proceed						
						Date

**Production Notes:**

---



---



---

- DIE
- FOLD
- SLIT
- FACE PANEL
- BACK FACE PANEL
- GUSSET PANEL
- INDICATES AREAS NOT VISIBLE ON FINISHED BAG