

# MERCHANDISE BAG TEMPLATE

**Finished Size: 10" x 2" x 15"**  
**Pinch Bottom**

PRINT MUST FIT WITHIN SHADED AREA

 PRINT AREA

**Please note our proof/ink policy:**

One set of proofs will be included at no charge, and an ink rollout will be sent for approval of custom ink matches "ONLY UPON REQUEST". Additional proofs or rollouts will be billed at:

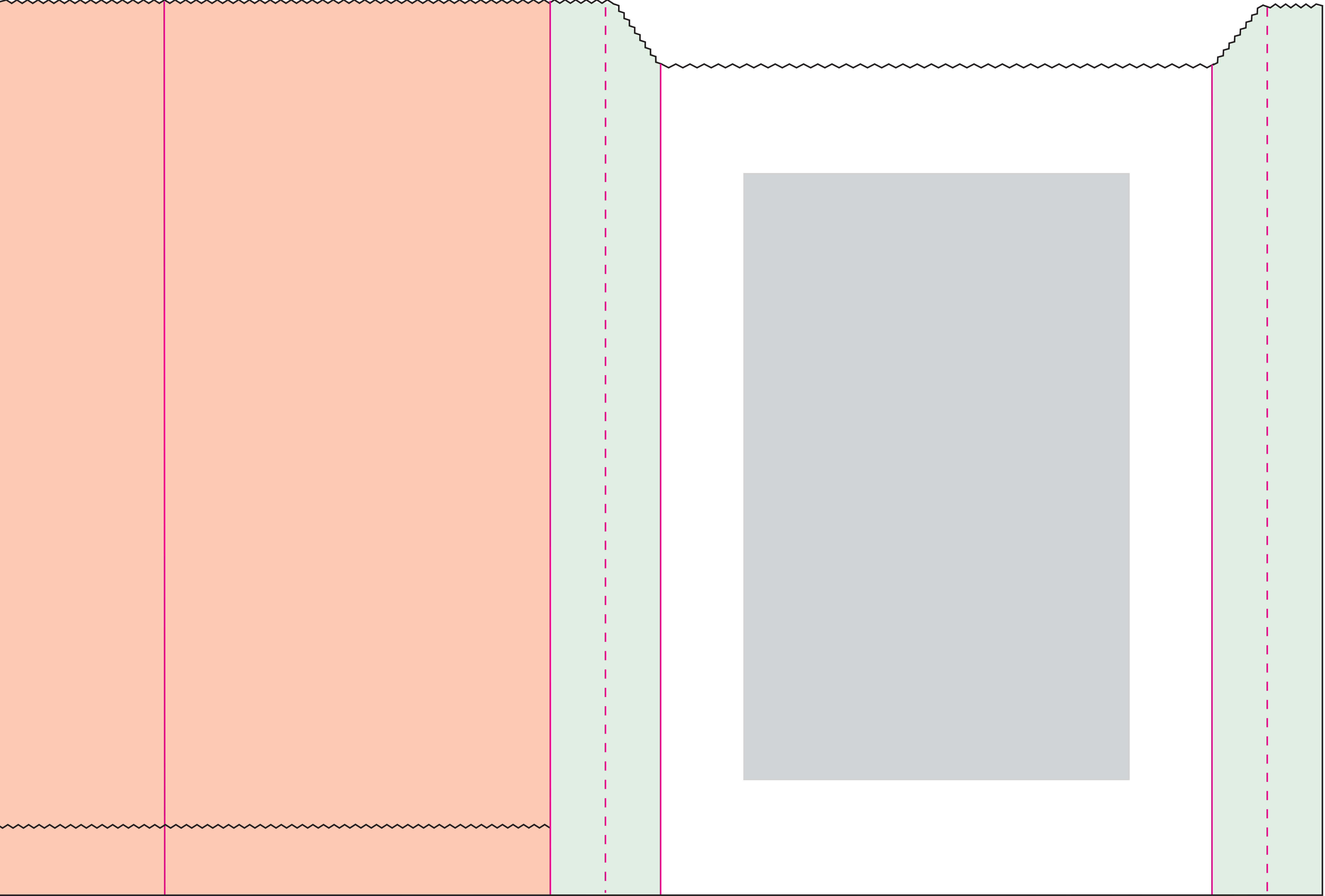
- Ink Rollout: \$25.00/color
- Additional Proofs: \$40.00/proof

We are happy to provide proofs and rollout during the quoting stage. Any cancelled purchase orders or speculative work not resulting in an order within 60 days will be billed at the cost listed above.

Post printing doesn't afford the same opportunity for color, clarity, consistency of position or complexity of artwork as compared to inline printing. Due to the limitations of the offline process, the expectations need to be understood prior to placing an order as there will be no returns accepted relative to the above listed items.

Please check spelling, layout, and design carefully prior to approving this proof as once approval has occurred, WCI is not responsible for any costs, including corrections and/or reprints. All orders are subject to the flexographic printing process and manufacturing capabilities listed in our product catalog. The following variations, including but not limited to, the art placement, bag composition, or paper/ink color between proofs and the completed order, will be considered acceptable bag quality. Cosmetic blemishes, which do not materially affect performance of the packaging, will not be considered a defect.

<b>CONTROL #:</b>	<b>PRINT NAME:</b>	<b>DATE:</b>
Paper Color/Basis Weight	Ink Color #1	Art Dimensions
	Ink Color #2	Art Placement
	Ink Color #3	
Customer Approval to Proceed		Date



  
 Back Seam

**Production Notes:**

---



---



---

-  DIE
-  FACE PANEL
-  BACK FACE PANEL
-  FOLD
-  GUSSET PANEL
-  SLIT
-  INDICATES AREAS NOT VISIBLE ON FINISHED BAG