

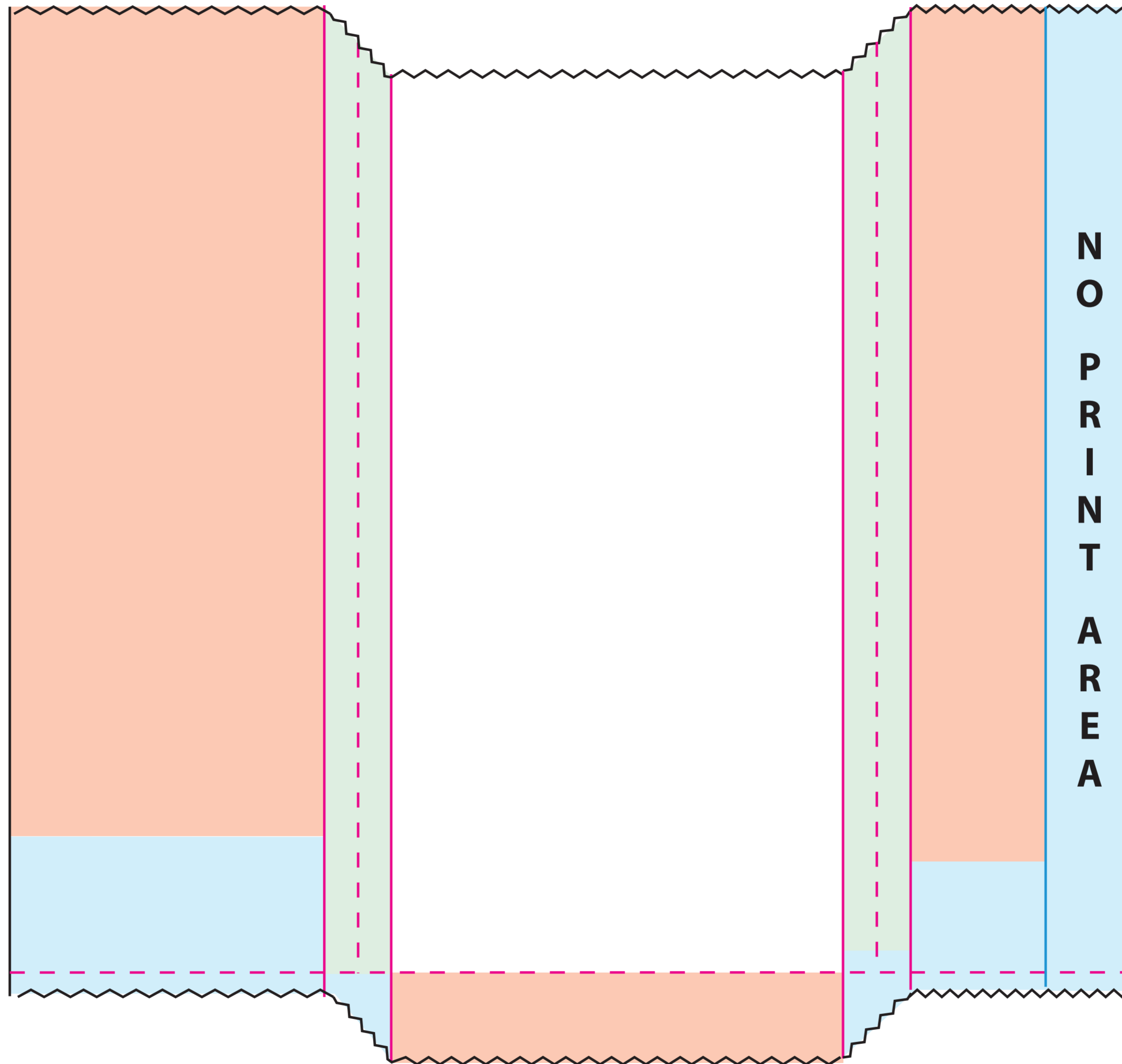
# MERCHANDISE BAG GUSSETED TEMPLATE

**Finished Size: 5" x 3/4" x 10"**  
**Pinch Bottom**

**Please note our current proofing policy (effective April 1, 2012):**  
**One set of proofs and drawdowns will be included at no charge. Additional proofs or drawdowns as a result of customer changes will be billed as follows:**

- Additional Proofs: \$40.00/ea
- Additional Drawdowns - \$25.00/color

*We are happy to provide proofs and drawdowns during the quoting stage. Any speculative work not resulting in a PO within 60 days will be billed at costs listed above.*



Please check this proof carefully. Once approved, there will be no claims or allowance for incorrect copy, size, position including art that's below printing capabilities. Artwork is subject to machine capabilities per terms and conditions. Back seam placement may vary. Art placement may shift up or down 1/8" for inline and 1/4" for post print. Side-to-side alignment tolerance is 1/16" for inline and 1/8" for post print.

<b>CONTROL#:</b>	<b>PRINT NAME:</b>	<b>DATE:</b>
Paper Color/Basis Weight	Ink Color #1	Art Dimensions
	Ink Color #2	Art Placement
	Ink Color #3	
Customer Approval to Proceed		Date

Production Notes:

---



---



---

- DIE
- FOLD
- SLIT
- FACE PANEL
- BACK FACE PANEL
- GUSSET PANEL
- INDICATES AREAS NOT VISIBLE ON FINISHED BAG