

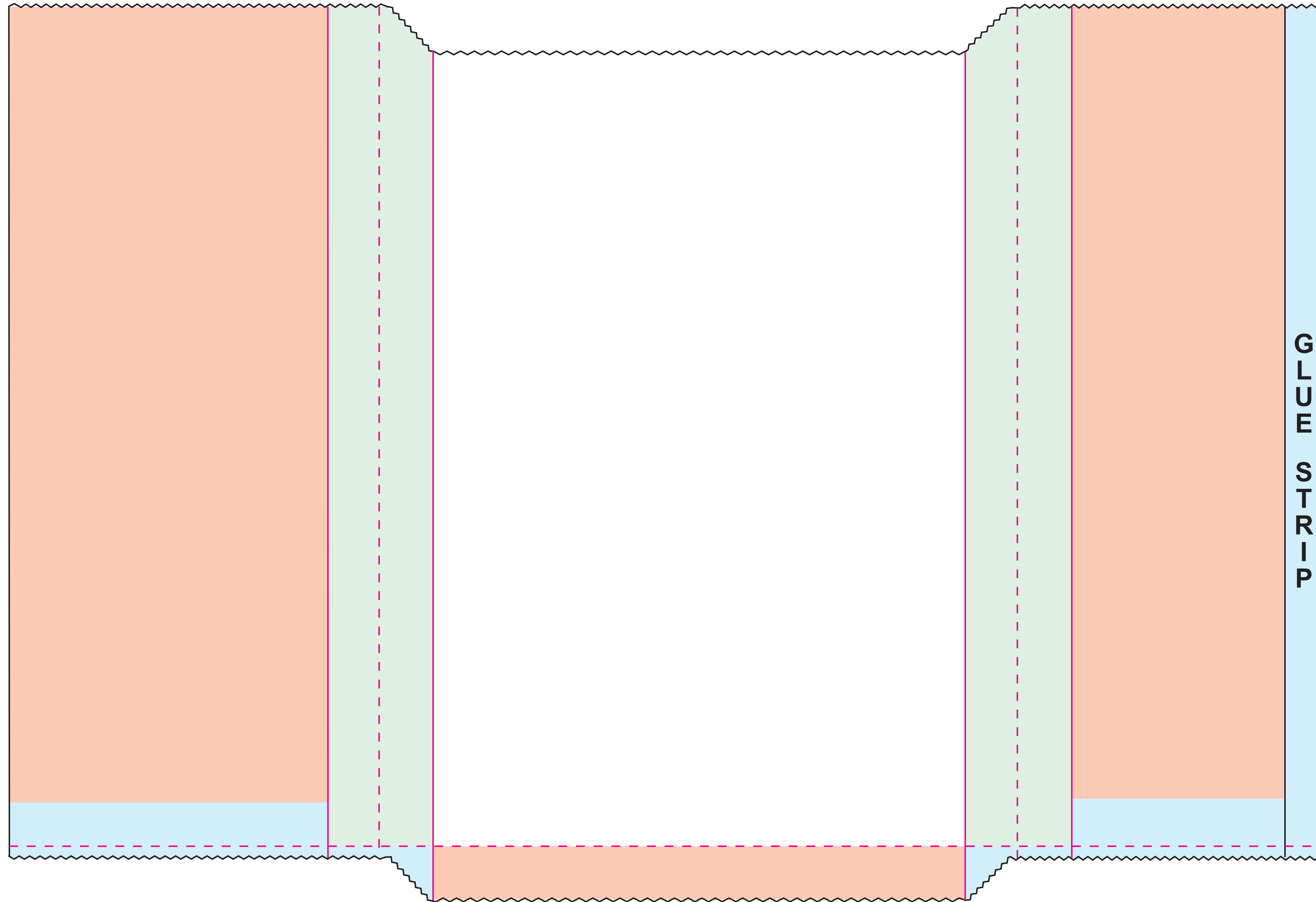
# MERCHANDISE BAG TEMPLATE

**Finished Size: 10" x 2" x 15"**  
**Pinch Bottom**

**Please note our proof/ink policy:**  
 One set of proofs will be included at no charge. Additional proofs or drawdowns as a result of customer changes will be billed as follows:

- Additional Proofs: \$40.00/ea
- Additional Drawdowns - \$25.00/color

*We are happy to provide proofs and drawdowns during the quoting stage. Any cancelled purchase orders or speculative work not resulting in a PO within 60 days will be billed at costs listed above.*



**Production Notes:**

---



---



---

- DIE
- FOLD
- SLIT
- FACE PANEL
- BACK FACE PANEL
- GUSSET PANEL
- INDICATES AREAS NOT VISIBLE ON FINISHED BAG

Please check this proof carefully. Once approved, there will be no claims or allowances for incorrect copy, size, or position. Proof indicates copy, size, and placement only. Back seam placement is subject to production capabilities. Art placement may shift up or down 1/8" for inline and 1/4" for post print. Side-to-side alignment tolerance is 1/16" for inline and 1/8" for post print.

<b>CONTROL#:</b>	<b>PRINT NAME:</b>	<b>DATE:</b>
Paper Color/Basis Weight	Ink Color #1	Art Dimensions
	Ink Color #2	Art Placement
	Ink Color #3	
Customer Approval to Proceed		
		Date