

# SOS BAG 3# TEMPLATE

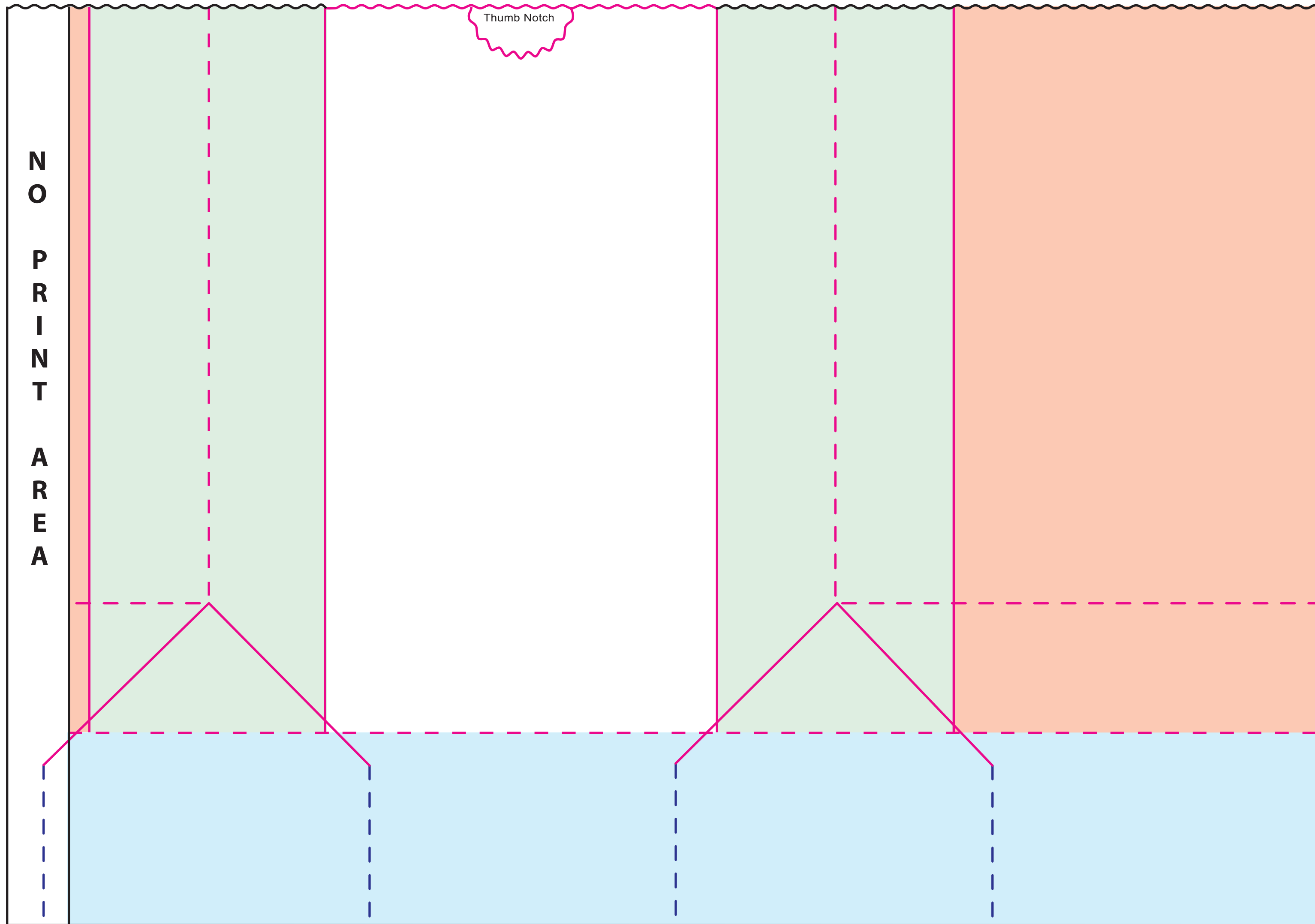
Finished Size: **4 3/4" x 2 7/8" x 8 13/16"**  
**Square Bottom**

**Please note our proof/ink policy:**

One set of proofs will be included at no charge, and an ink rollout will be sent for approval of custom ink matches "ONLY UPON REQUEST". Additional proofs or rollouts will be billed at:

- Ink Rollout: \$25.00/color
- Additional Proofs: \$40.00/proof

We are happy to provide proofs and rollout during the quoting stage. Any cancelled purchase orders or speculative work not resulting in an order within 60 days will be billed at the cost listed above.



Please check this proof carefully. Once approved, there will be no claims or allowance for incorrect copy, size, position including art that's below printing capabilities. Artwork is subject to machine capabilities per terms and conditions. Back seam placement may vary. Art placement may shift up or down 1/8" for inline and 1/4" for post print. Side-to-side alignment tolerance is 1/16" for inline and 1/8" for post print.

<b>CONTROL #:</b>	<b>PRINT NAME:</b>	<b>DATE:</b>
Paper Color/Basis Weight	Ink Color #1	Art Dimensions
	Ink Color #2	Art Placement
	Ink Color #3	
Customer Approval to Proceed		Date

**Production Notes:**

---



---



---

- DIE
- - - FOLD
- SLIT
- FACE PANEL
- BACK FACE PANEL
- GUSSET PANEL
- BOTTOM OF BAG