

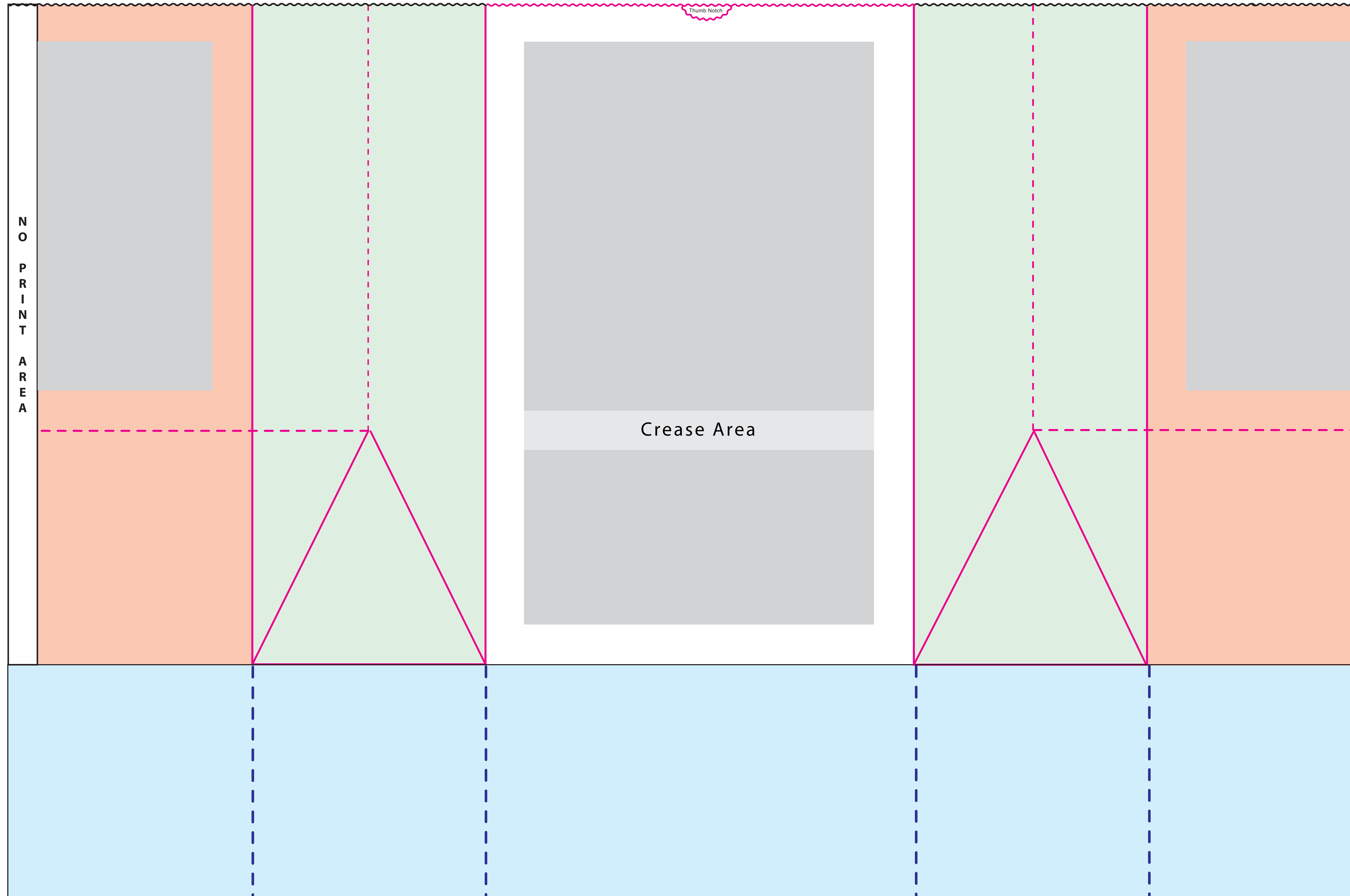
SOS BAG TEMPLATE - MODIFIED 1/6 BBL

Finished Size: **11" x 6" x 17"**
Square Bottom

PRINT MUST FIT WITHIN SHADED AREA

 PRINT AREA

Please note our current proofing policy (effective April 1, 2012):
One set of proofs and drawdowns will be included at no charge. Additional proofs or drawdowns as a result of customer changes will be billed as follows:
 • Additional Proofs: \$40.00/ea
 • Additional Drawdowns - \$25.00/color
 We are happy to provide proofs and drawdowns during the quoting stage. Any speculative work not resulting in a PO within 60 days will be billed at costs listed above.










NO PRINT AREA

Crease Area

Thumb Notch

Production Notes:

-  DIE
-  FOLD
-  SLIT
-  FACE PANEL
-  BACK FACE PANEL
-  GUSSET PANEL
-  INDICATES AREAS NOT VISIBLE ON FINISHED BAG

Please check this proof carefully. Once approved, no claims or allowances of any kind will be allowed for incorrect copy, size, or position. Proof indicates copy, size and placement only. Back seam placement subject to production capabilities. Copy within 1/4" of bag edges may bleed over edge.

CONTROL #:	PRINT NAME:		DATE:	
	Paper Color/Basis Weight	Ink Color #1	Ink Color #2	Ink Color #3
				Art Placement
Customer Approval to Proceed			Customer Approval with Changes Noted	
Date			Date	