

MERCHANDISE BAG TEMPLATE

**Finished Size: 8 1/2" x 11"
Pinch Bottom**

PRINT MUST FIT WITHIN SHADED AREA

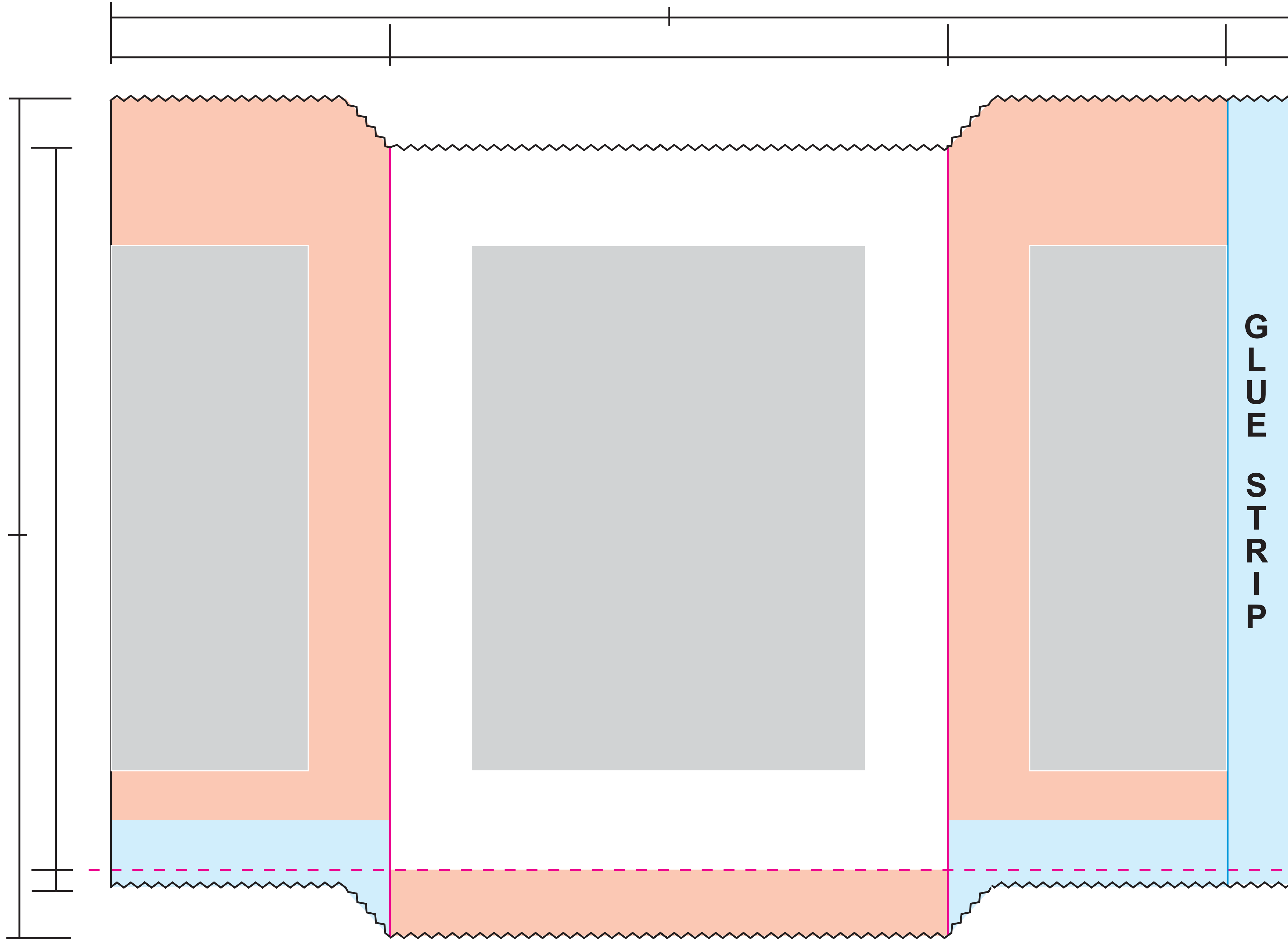


Please note our current proofing policy (effective April 1, 2012):

One set of proofs and drawdowns will be included at no charge. Additional proofs or drawdowns as a result of customer changes will be billed as follows:

- Additional Proofs: \$40.00/ea
- Additional Drawdowns - \$25.00/color

We are happy to provide proofs and drawdowns during the quoting stage. Any speculative work not resulting in a PO within 60 days will be billed at costs listed above.



Please check this proof carefully. Once approved, no claims or allowances of any kind will be allowed for incorrect copy, size, or position. Proof indicates copy, size and placement only. Back seam placement subject to production capabilities. Copy within 1/4" of bag edges may bleed over edge.

CONTROL#: _____ **PRINT NAME:** _____

DATE: _____

Paper Color/Basis Weight

Ink Color #1

Ink Color #2

Ink Color #3

Art Dimensions

Art Placement

Customer Approval to Proceed Date

Customer Approval with Changes Noted

Date

Production Notes:

- DIE
- - - FOLD
- SLIT

- FACE PANEL
- BACK FACE PANEL
- GUSSET PANEL
- INDICATES AREAS NOT VISIBLE ON FINISHED BAG